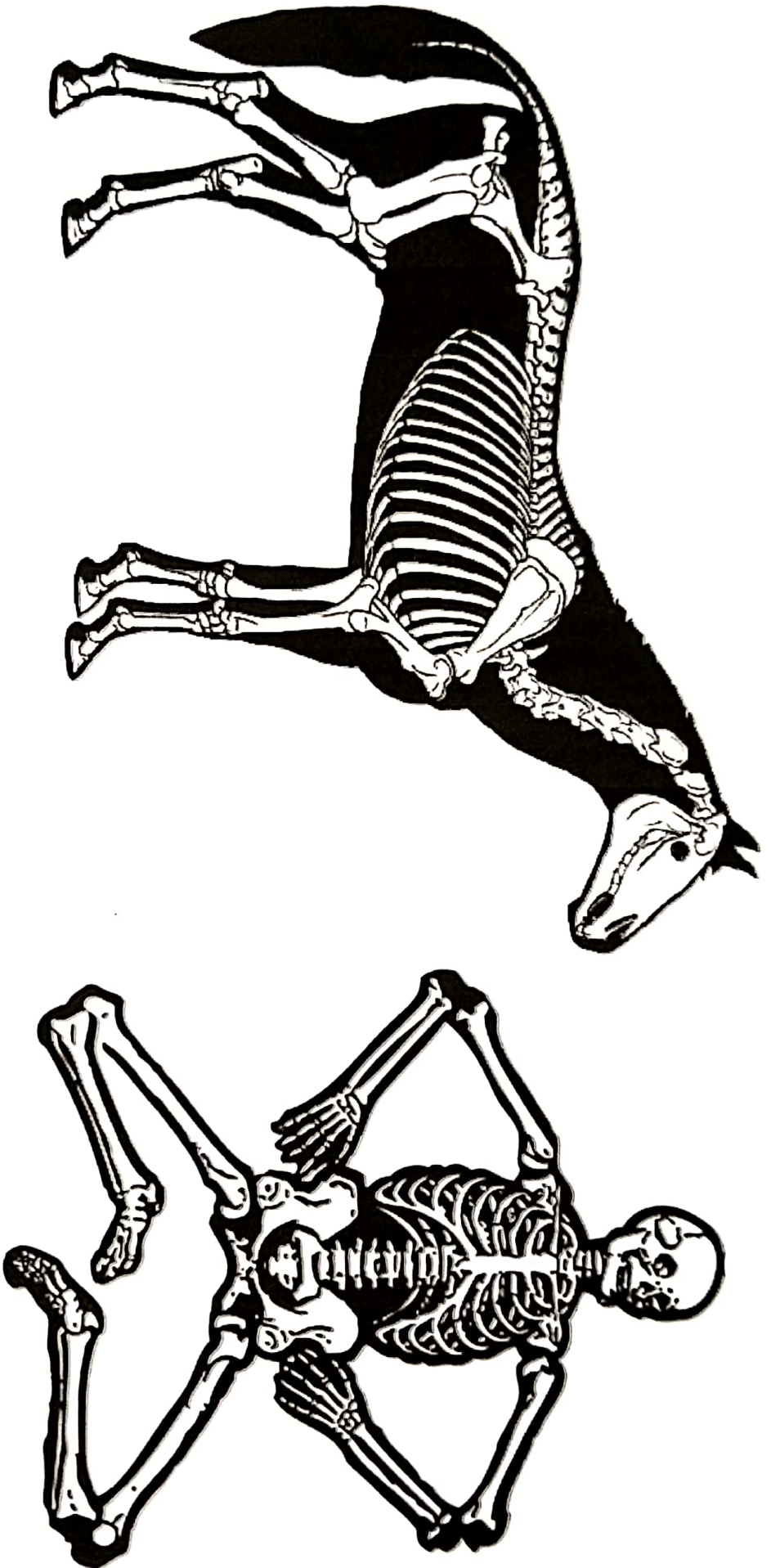


LET'S COMPARE THE HORSE & HUMAN SKELETONS

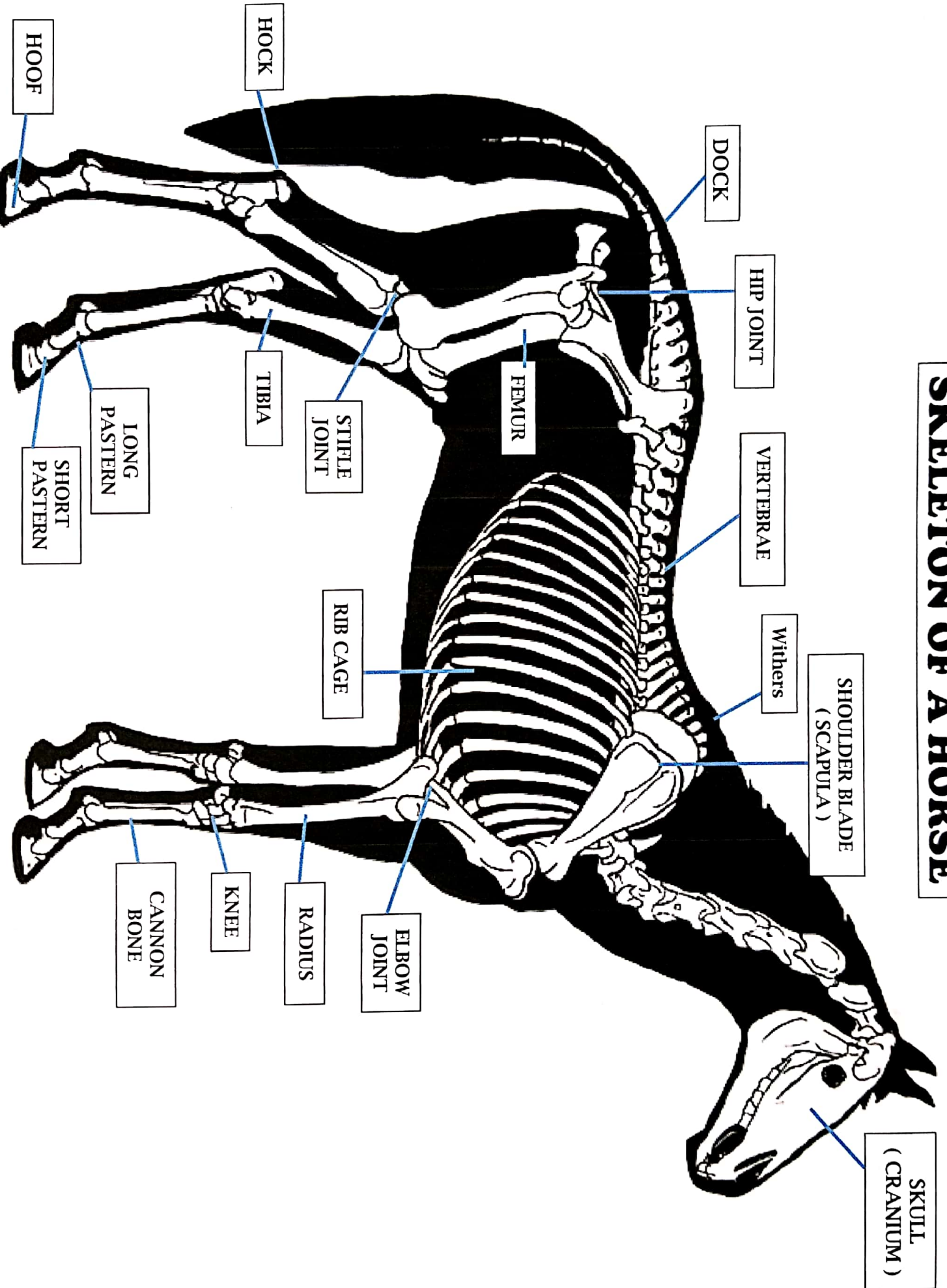


Color the bone on the horse and human the color indicated:

FOOT BONE-BLUE TAIL BONE-GREEN SKULL BONE-BLACK RIB BONES-YELLOW

VERTEBRAE/BACK BONES-PURPLE SHOULDER BONE-RED KNEE BONE-BROWN HIP BONE-ORANGE

SKELETON OF A HORSE



SKULL
(CRANIUM)

SHOULDER BLADE
(SCAPULA)

Withers

VERTEBRAE

DOCK

HIP JOINT

FEMUR

TIBIA

HOOF

HOCK

STIFLE JOINT

RIB CAGE

LONG PASTEREN

SHORT PASTEREN

Withers

CANNON BONE

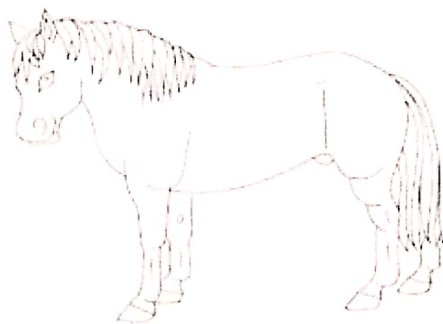
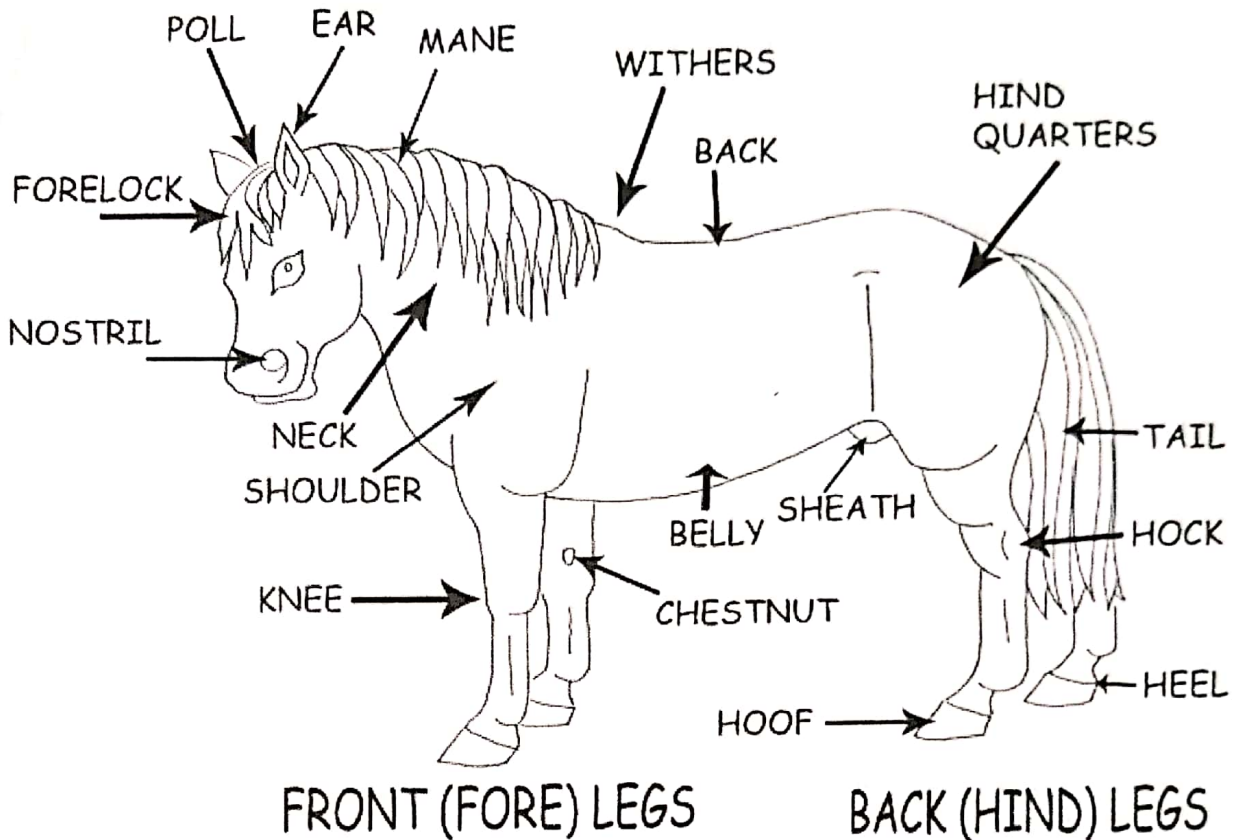
KNEE

RADIUS

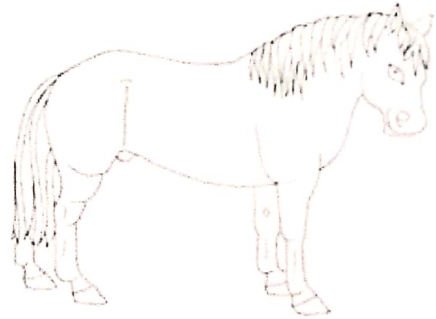
ELBOW JOINT

POINTS of a PONY

It is good to know these points of the pony so that you can talk about and understand your pony more clearly



Near Side



Off Side

Fill in the missing letters!

1. W _ th _ _ s

2. K _ _ e

3. H _ _ l

4. Ch _ _ tn _ t

5. H _ ck

6. H _ _ d l _ g

7. Sh _ _ ld _ _

8. F _ rel _ _ k

9. P _ ll

10. H _ _ f



N _ _ r side



O _ _ side